

No. of Printed Pages : 4

Roll No. 181734/171734/121734
/31734

3th Sem. / Agri, Mech, Prod, T&D, CNC, CAD/CAM,
GE, Metallurgy,

Subject : Mechanical Engineering Drawing/ M/c Drg.

Time : 3 Hrs.

M.M. : 100

SECTION-A

Note: Very short answer type questions. Attempt any ten questions out of twelve questions. (10x2=20)

(Course Outcome/CO)

- Q.1 Define allowance. (CO-1)
- Q.2 Define hole basis system (CO-1)
- Q.3 Define maximum limit of size (CO-1)
- Q.4 Define bearings (CO-2)
- Q.5 What do you understand by Coupling? (CO-3)
- Q.6 What are the uses of pipe joints? (CO-2)
- Q.7 Define addendum of a gear (CO-6)
- Q.8 Name two IC engine parts. (CO-5)
- Q.9 What is the use of screw jack? (CO-4)
- Q.10 What is the function of drilling jig? (CO-4)
- Q.11 What do you understand by wall bracket? (CO-2)
- Q.12 Define flank of a gear. (CO-6)

SECTION-B

Note: Long answer type questions. Attempt any four questions out of five questions. 4x20=80

- Q.13 Draw the profile of an involute teeth for a gear having 36 teeth and module 12mm. the pressure angle is 20° (CO-6)
- Q.14 Make free hand sketch of two views of a connecting rod. (CO-5)
- Q.15 Make a proportionate free hand sketch of screw jack. (CO-4)

Q.16 Figure (a) shows the detail drawing of a plumber block. Assemble all the parts together and draw the following views (CO-2)

(i) Front elevation half section.

(ii) Top View

Assume all the necessary dimensions. Select a suitable. Also prepare Bill of materials

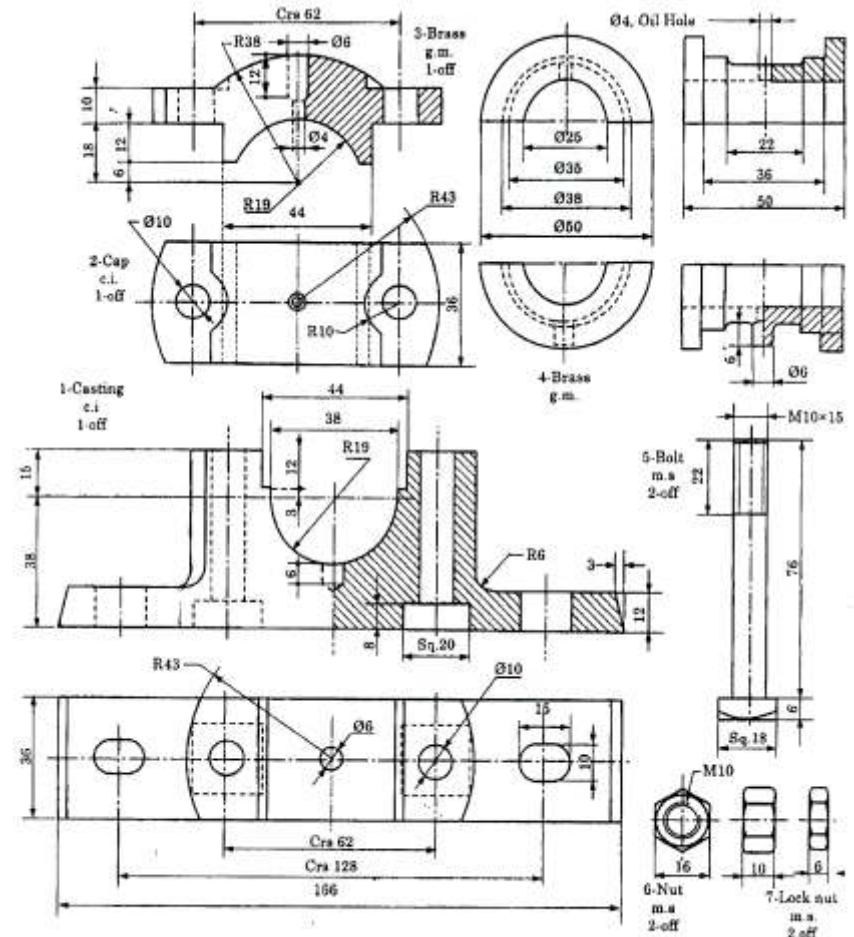


Figure (a) Detail of Plumber Block

(1) 181734/171734/121734
/31734

(2) 181734/171734/121734
/31734

Q.17 Detail drawing of a foot step bearing is shown in Figure (b). Assemble all the parts together and draw the following views. (CO-3)

- (i) Full sectional front views
- (ii) Side view.
- (iii) Top View.

Assume all the necessary dimensions and select a suitable scale.

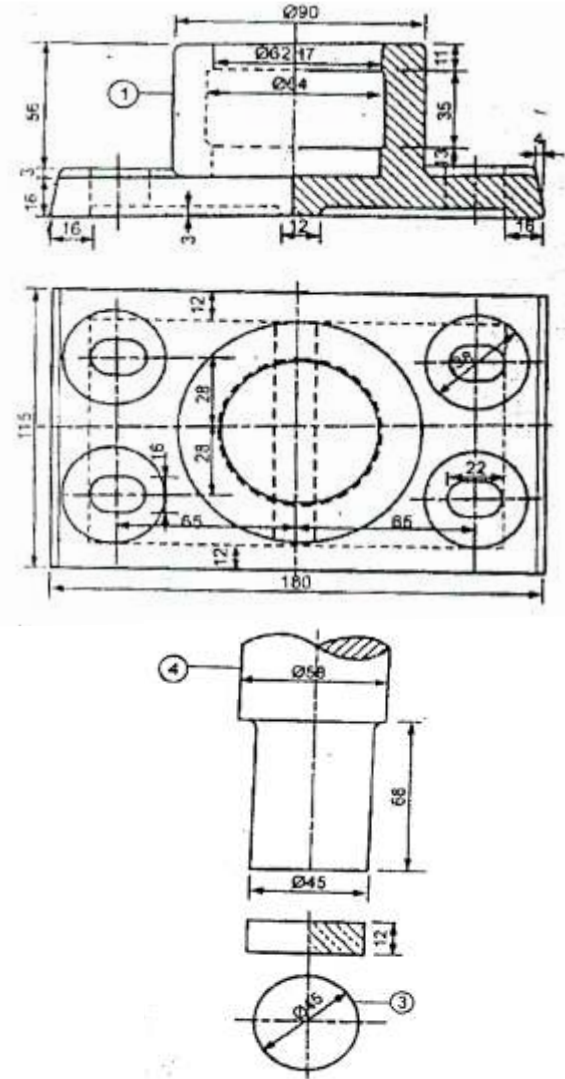
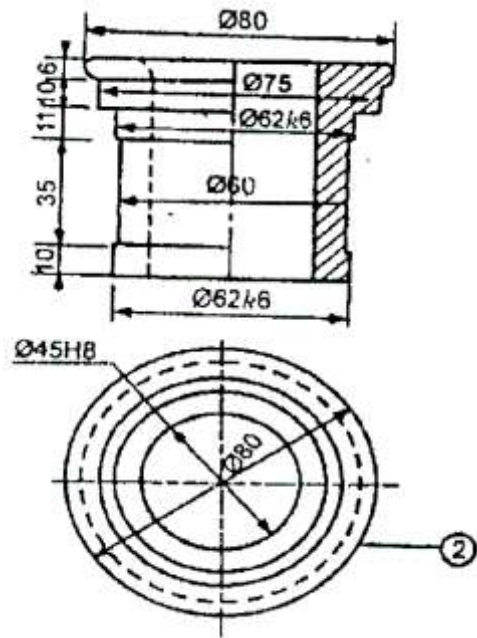


Figure (b) Detail of Foot Step Bearing

Note: Course outcome (CO) mentioned in the question paper is for official purpose only.

(3) 181734/171734/121734
/31734

(5320)

(4) 181734/171734/121734
/31734